

Convenient Services at Sunshine City

Multipurpose restrooms

People with disabilities can comfortably utilize the multipurpose restrooms in the following facilities.

- AJ-NO-KOMICHI B1 Floor
- Sunshine 60 Bldg. 4F, 6F, 8F
- alpa B1, 3F
- World Import Mart Bldg. B1, 1F, 5F, 8F
- Bunka Kaikan Bldg. B1, 1F, 2F, 3F, 4F

Multipurpose restrooms (Ostomate-compatible)

This restroom can be used by people who have undergone a colostomy or an urostomy

- Sunshine 60 Bldg. 59F ●alpa B1, 1F, 2F, 3F ●World Import Mart Bldg. 4F, 9F, Rooftop (Aquarium)

Taxi Stand

The taxi stand is sheltered and barrier-free to provide easy access.

- alpa 1F South Entrance
- Prince Hotel Main Entrance

Disaster Control Center

Please inquire at this service counter regarding lost items, lost children, illnesses, or other problems.

[Counter]

- Sunshine 60 Bldg. 1F
- Bunka Kaikan Bldg. 1F Bus Terminal

[Information Desk]

- Lost items (TEL.03-3989-3340)
- Other problems (TEL.03-3989-3429)

Information

We offer guidance using telephone interpreting (10AM - 8PM *with exceptions)

- alpa B1, 1F

Wheelchair Rental

We lend wheelchairs. (7AM-11PM) *Please note that the number of wheelchairs is limited.

- alpa B1 Main Information Desk / Avenue Information Desk ●alpa 1F Avenue Information Desk ●Sunshine 60 Bldg. 1F Main Disaster Control Center ●Bunka Kaikan Bldg. 1F Disaster Control Center ●Sunshine 60 Bldg. B2 Parking Front *If the information desk clerk is absent, please call the Disaster Control Center (TEL.03-3989-3429).

Post office

[Counter] Monday to Friday 9 AM - 6 PM
[ATM] Monday to Friday 8 AM - 9 PM
Saturday 8 AM - 9 PM
Sunday/Holidays 8 AM - 8 PM

- Sunshine 60 Bldg. B1

Coin lockers

Lockers are available for temporary storage of purchased items or belongings.

- B1 Underground Passage ●alpa B1, 1F ●World Import Mart Bldg. 4F, Rooftop (Entrance to Aquarium)
- Bunka Kaikan Bldg. 1F, 2F, 4F

Cash and Foreign Exchange Services

[ATM] Automated Teller Machines Mizuho ●Sunshine 60 Bldg. 4F / alpa B1, 1F

- SAISON ●Sunshine 60 Bldg. B1
- Mitsui Sumitomo ●Sunshine 60 Bldg. B1
- SEVEN BANK ●alpa B1
- [Currency Exchange Machine]
- alpa 1F (inside GLOCAL CAFE)

Baby Room (Nursery)

This facility features a comfortable bench for babies, nursing rooms, diaper changing tables, and a sink with hot water.

(10AM - 8PM *with exceptions)

- alpa B1, 2F, 3F

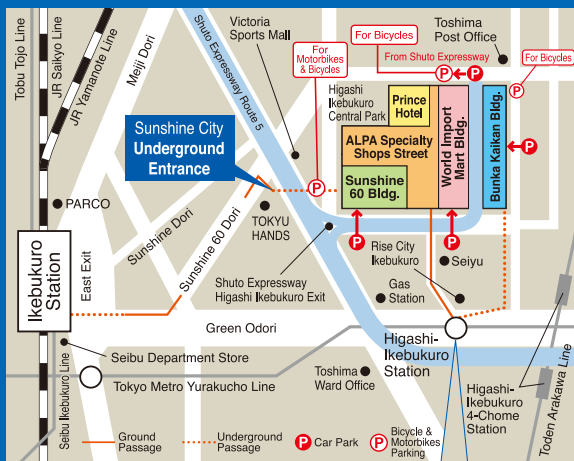
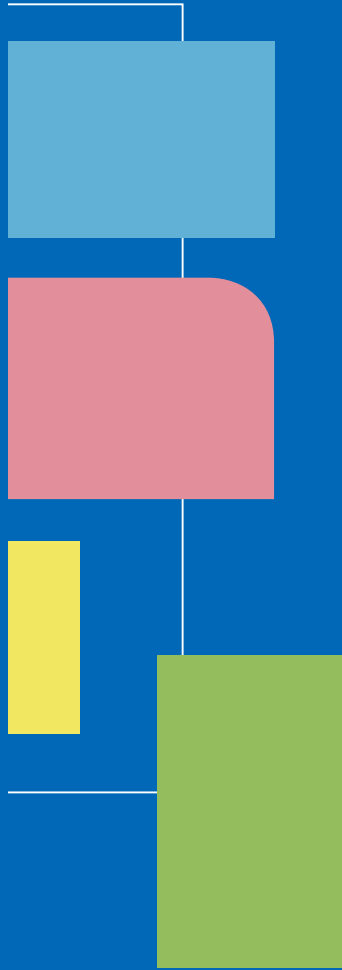
Baby stroller rental

Baby strollers are rented out to customers visiting with infants or small children. (10AM - 8PM)

- alpa B1 Main Information Desk / B1 Avenue Information Desk
- alpa 1F Avenue Information Desk

Sunshine City GUIDE MAP

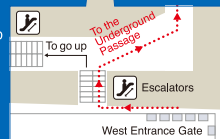
For Foreign Visitors



By train About 8 minutes on foot from Ikebukuro Station
About 3 minutes on foot from Higashi-Ikebukuro Station (Tokyo Metro Yurakucho Line)
About 4 minutes on foot from Higashi-Ikebukuro 4-Chome Station (Toden Arakawa Line)

By car Directly from Higashi-Ikebukuro Exit of Shuto Expressway Route 5

Toei Bus Boarding & Alighting: Ikebukuro Sunshine City bus stop (Inside bus terminal on 1F of Bunka Kaikan Bldg.)



Sunshine City

3-1 Higashi-Ikebukuro, Toshima-ku, Tokyo 170-8630
General Information Line:03-3989-3331

Sunshine City

